

EWS Antibody
Mouse Monoclonal Antibody
Catalog # AN1268**Specification**

EWS Antibody - Product Information

Application	WB, IHC
Primary Accession	Q01844
Reactivity	Human
Host	Mouse
Clonality	Monoclonal
Isotype	IgG2b
Calculated MW	68478

EWS Antibody - Additional Information

Gene ID	2130
Gene Name	EWSR1

Target/Specificity

full length recombinant human EWS expressed in and purified from E. coli.

Dilution

WB~~ 1:1000

IHC~~1:100~500

Format

Protein G purified culture supernatant

Storage

Maintain refrigerated at 2-8°C for up to 6 months. For long term storage store at -20°C in small aliquots to prevent freeze-thaw cycles.

Precautions

EWS Antibody is for research use only and not for use in diagnostic or therapeutic procedures.

Shipping

Blue Ice

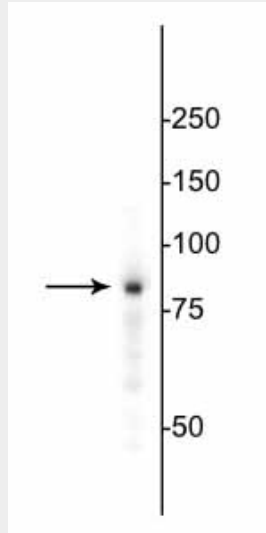
EWS Antibody - Protocols

Provided below are standard protocols that you may find useful for product applications.

- [Western Blot](#)
- [Blocking Peptides](#)
- [Dot Blot](#)
- [Immunohistochemistry](#)
- [Immunofluorescence](#)
- [Immunoprecipitation](#)

- [Flow Cytometry](#)
- [Cell Culture](#)

EWS Antibody - Images



Western blot of HeLa cell lysate showing specific immunolabeling of the ~85 kDa EWS protein.

EWS Antibody - Background

The Ewing Sarcoma Breakpoint Region 1 (EWSR1) gene encodes the EWS protein, which along with FUS and TAF15 comprises the FET family of RNA-binding proteins. EWS is primarily expressed in the nucleus, but has also been found in the cytoplasm of secretory cell types (Andersson et al., 2008). Defects of EWSR1 are known to cause Ewing sarcoma and have been implicated in amyotrophic lateral sclerosis (ALS) (Svetoni et al., 2016). Recently, EWS has been shown to directly interact with oncogenic ETS transcription factors in the promotion of prostate cancer (Kedage et al., 2016).